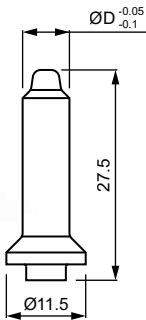
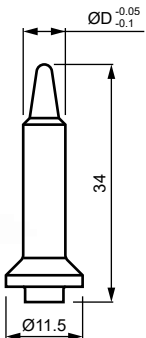


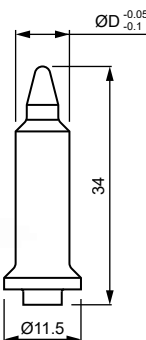
KRÁTKY



DLHÝ



S GOLIEROM



### VÝMENNÉ ELEKTRODY

OTVOR V PLECHU ØD	SW 19	SW 24	OTVOR V PLECHU ØD	SW 19	SW 24
6.5	1111-ZK-10031	1111-ZK-10078	7.8	1111-ZK-10044	1111-ZK-10091
6.6	1111-ZK-10032	1111-ZK-10079	7.9	1111-ZK-10045	1111-ZK-10092
6.7	1111-ZK-10033	1111-ZK-10080	8.0	1111-ZK-10046	1111-ZK-10093
6.8	1111-ZK-10034	1111-ZK-10081	8.1	1111-ZK-10047	1111-ZK-10094
6.9	1111-ZK-10035	1111-ZK-10082	8.2	1111-ZK-10048	1111-ZK-10095
7.0	1111-ZK-10036	1111-ZK-10083	8.3	1111-ZK-10049	1111-ZK-10096
7.1	1111-ZK-10037	1111-ZK-10084	8.4	1111-ZK-10050	1111-ZK-10097
7.2	1111-ZK-10038	1111-ZK-10085	8.5	1111-ZK-10051	1111-ZK-10098
7.3	1111-ZK-10039	1111-ZK-10086	8.6	1111-ZK-10052	1111-ZK-10099
7.4	1111-ZK-10040	1111-ZK-10087	8.7	1111-ZK-10053	1111-ZK-10100
7.5	1111-ZK-10041	1111-ZK-10088	8.8	1111-ZK-10054	1111-ZK-10101
7.6	1111-ZK-10042	1111-ZK-10089	8.9	1111-ZK-10055	1111-ZK-10102
7.7	1111-ZK-10043	1111-ZK-10090	9.0	1111-ZK-10056	1111-ZK-10103

### KERAMICKÉ KOLÍKY CERAZUR

OTVOR V PLECHU ØD	KRÁTKY	DLHÝ	S GOLIEROM
6.5	8228-ZK-11032	8228-ZK-10032	8228-ZK-10332
6.6	8228-ZK-11033	8228-ZK-10033	8228-ZK-10333
6.7	8228-ZK-11034	8228-ZK-10034	8228-ZK-10334
6.8	8228-ZK-11035	8228-ZK-10035	8228-ZK-10335
6.9	8228-ZK-11036	8228-ZK-10036	8228-ZK-10336
7.0	8228-ZK-11037	8228-ZK-10037	8228-ZK-10337
7.1	8228-ZK-11038	8228-ZK-10038	8228-ZK-10338
7.2	8228-ZK-11039	8228-ZK-10039	8228-ZK-10339
7.3	8228-ZK-11040	8228-ZK-10040	8228-ZK-10340
7.4	8228-ZK-11041	8228-ZK-10041	8228-ZK-10341
7.5	8228-ZK-11042	8228-ZK-10042	8228-ZK-10342
7.6	8228-ZK-11043	8228-ZK-10043	8228-ZK-10343
7.7	8228-ZK-11044	8228-ZK-10044	8228-ZK-10344
7.8	8228-ZK-11045	8228-ZK-10045	8228-ZK-10345
7.9	8228-ZK-11046	8228-ZK-10046	8228-ZK-10346
8.0	8228-ZK-11047	8228-ZK-10047	8228-ZK-10347
8.1	8228-ZK-11048	8228-ZK-10048	8228-ZK-10348
8.2	8228-ZK-11049	8228-ZK-10049	8228-ZK-10349
8.3	8228-ZK-11050	8228-ZK-10050	8228-ZK-10350
8.4	8228-ZK-11051	8228-ZK-10051	8228-ZK-10351
8.5	8228-ZK-11052	8228-ZK-10052	8228-ZK-10352

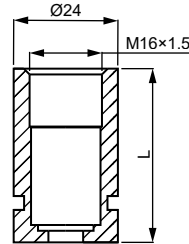
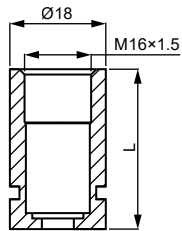


Na objednávku dodávame aj kolíky z materiálu Volcera.  
Kód produktu: „8440-ZK-xxxx“ („xxxx“ je posledné pätčísle v tabuľke, napr. pre Ø6.5 je kód 8440-ZK-11032)

# ZOSTAVY PRE NAVAROVANIE MATÍC M6 CHLADENÉ VZDUCHOM

Pro  
Spot

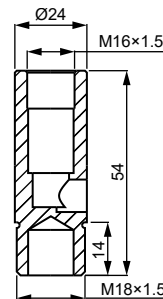
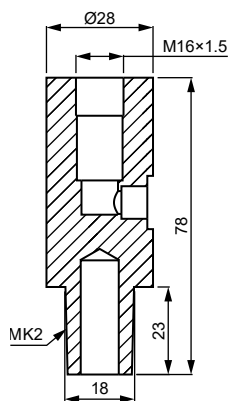
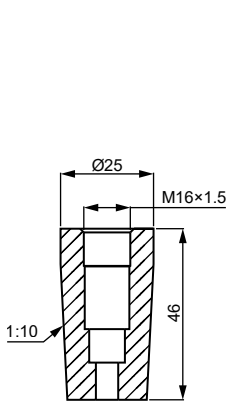
## DRŽIAKY ELEKTROD



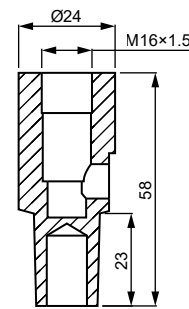
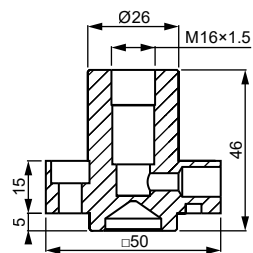
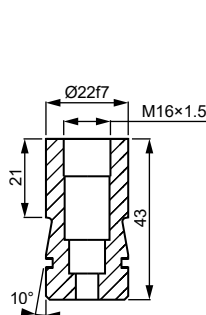
L	Ø18	Ø24
30	1111-ZK-10503	1111-ZK-10509
40	1111-ZK-10504	1111-ZK-10510
50	1111-ZK-10505	1111-ZK-10511



ADVANCED CERAMIC SOLUTIONS  
**DOCERAM**<sup>®</sup>



KUŽEL 1:10	KUŽEL MK2	ZÁVIT M18x1.5
1111-ZK-10581	1111-ZK-10541	1111-ZK-10561



S-TYP	R-TYP	T-TYP
1111-ZK-10681	1111-ZK-10611	1111-ZK-10641



VÝMENNÁ  
ELEKTRODA



POLOHOVACÍ  
KOLÍK



PRUŽINA



DRŽIAK  
ELEKTRODY



RÝCHLOSPÖJKA  
NA STLAČENÝ  
VZDUCH

## PRÍSLUŠENSTVO K DRŽIAKOM ELEKTROD

PRUŽINA



DĹŽKA DRŽIAKA	OZNAČENIE
do 30 mm	1112-ZK-12205
od 40 mm	1112-ZK-12206

O-KRÚŽOK



TYP DRŽIAKA	OZNAČENIE
Ø18	1123-ZK-16434
Ø24	1123-ZK-16435
S-typ	1123-ZK-58440

RÝCHLOSPÖJKA



—	OZNAČENIE
prívod stlačeného vzduchu G1/8"-Ø6	1116-ZK-12353